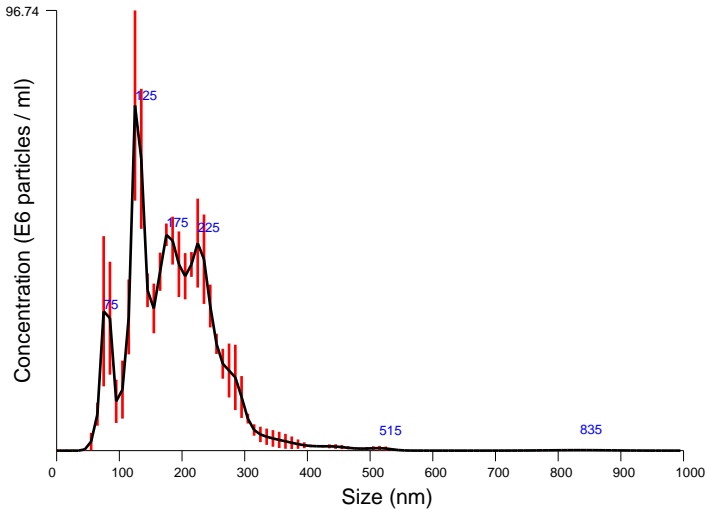


FTLA Size / Concentration graph for Experiment:
Capture 2022-10-27 01-04-39



Averaged FTLA Size / Concentration
Red error bars indicate +/- 1 standard error of the mean

Included Files

Capture 2022-10-27 01-05-16
Capture 2022-10-27 01-06-01
Capture 2022-10-27 01-06-52

Details

NTA Version: NTA 3.0 0060
Script Used: SOP Standard Measurement 04-24-10PM
13Mar2020.txt
Time Captured: 01:04:39 27/10/2022
Operator: Ruth
Pre-treatment:
Sample Name: 10.1pp
Diluent: Cyclohexane
Remarks:

Capture Settings

Camera Type: SCMOS
Camera Level: 8
Slider Shutter: 350
Slider Gain: 250
FPS: 45.5
Number of Frames: 1363
Temperature: 22.0 °C
Viscosity: (Water) 1.0 cP
Dilution factor: Dilution not recorded

Analysis Settings

Detect Threshold: 20
Blur Size: Auto
Max Jump Distance: Auto: 6.2 - 6.5 pix

Results

Stats: Merged Data

Mean: 181.0 nm
Mode: 128.0 nm
SD: 75.1 nm
D10: 91.7 nm
D50: 169.7 nm
D90: 261.7 nm

Stats: Mean +/- Standard Error

Mean: 181.3 +/- 2.7 nm
Mode: 128.2 +/- 1.8 nm
SD: 74.8 +/- 5.6 nm
D10: 91.4 +/- 8.7 nm
D50: 169.6 +/- 1.5 nm
D90: 262.2 +/- 8.4 nm
Concentration: 8.31e+008 +/- 5.97e+007 particles/ml
42.2 +/- 3.0 particles/frame
54.1 +/- 4.0 centres/frame